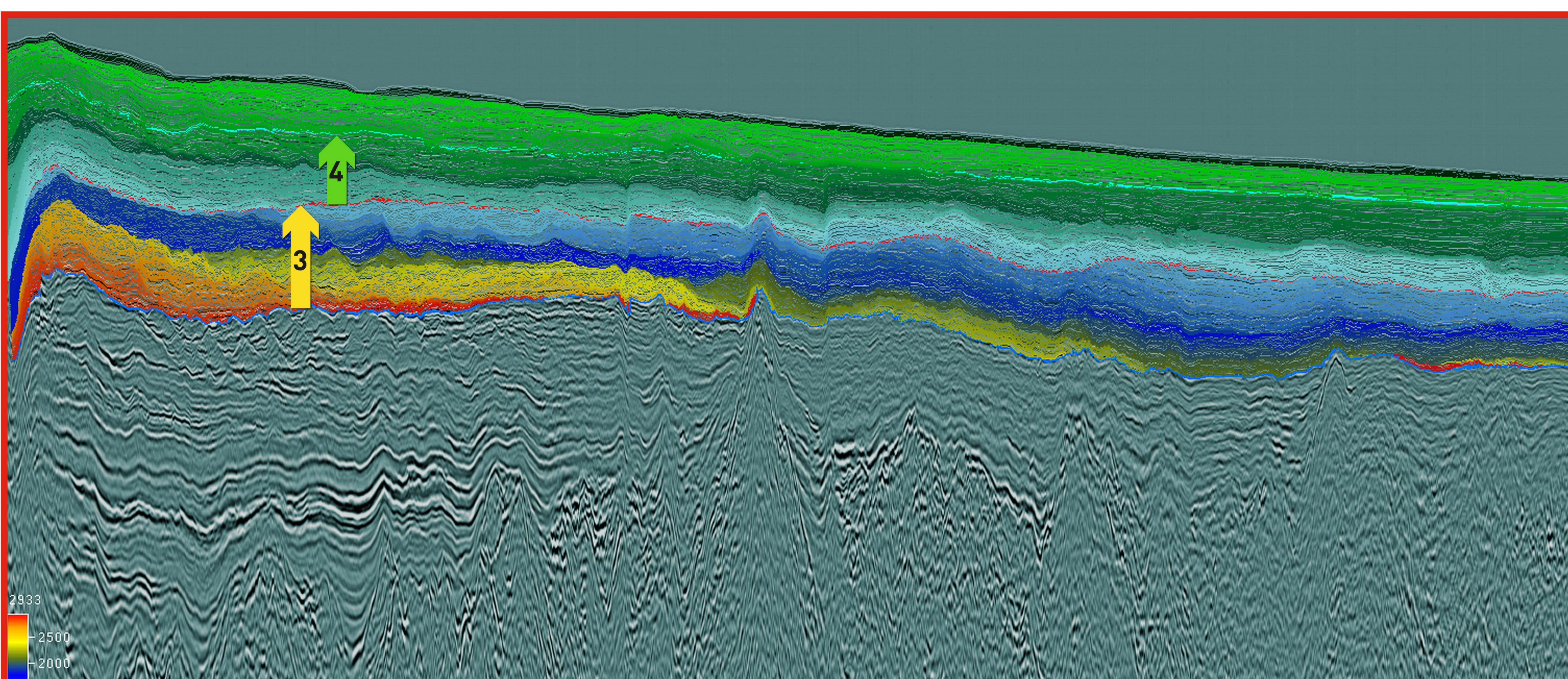
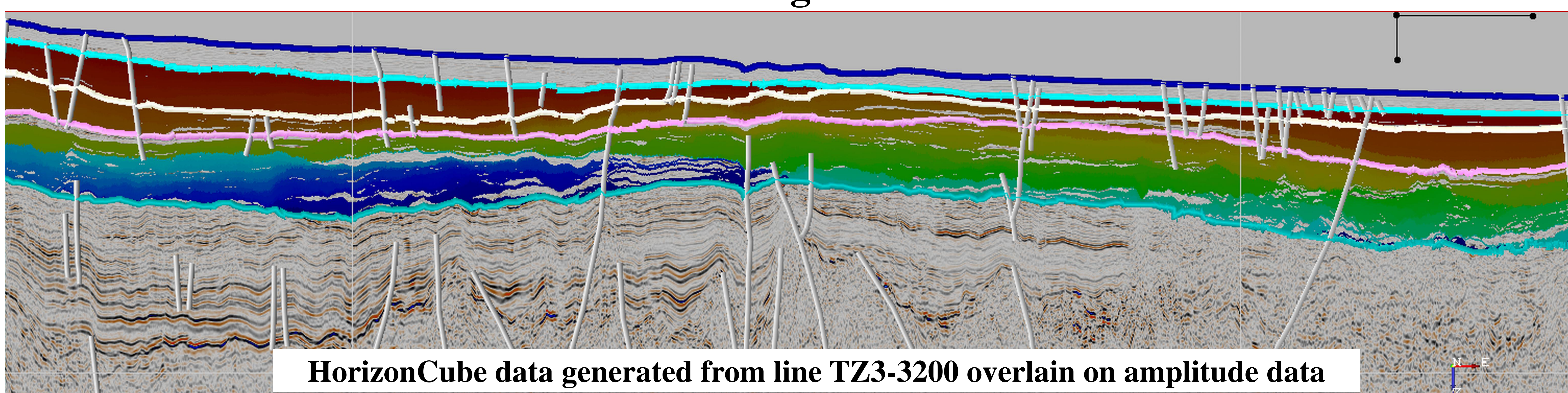


HorizonCube and Wheeler Transform Generated, Stratal Packages Identified and Correlated on 7 Regional 2D Seismic Lines

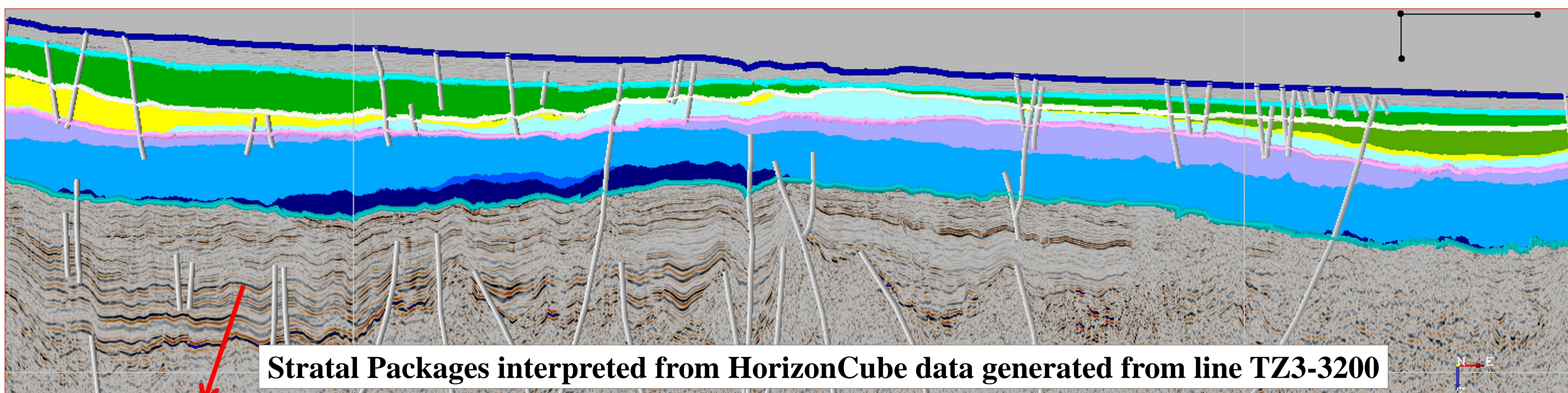
Identification of Stratal Packages from HorizonCube data



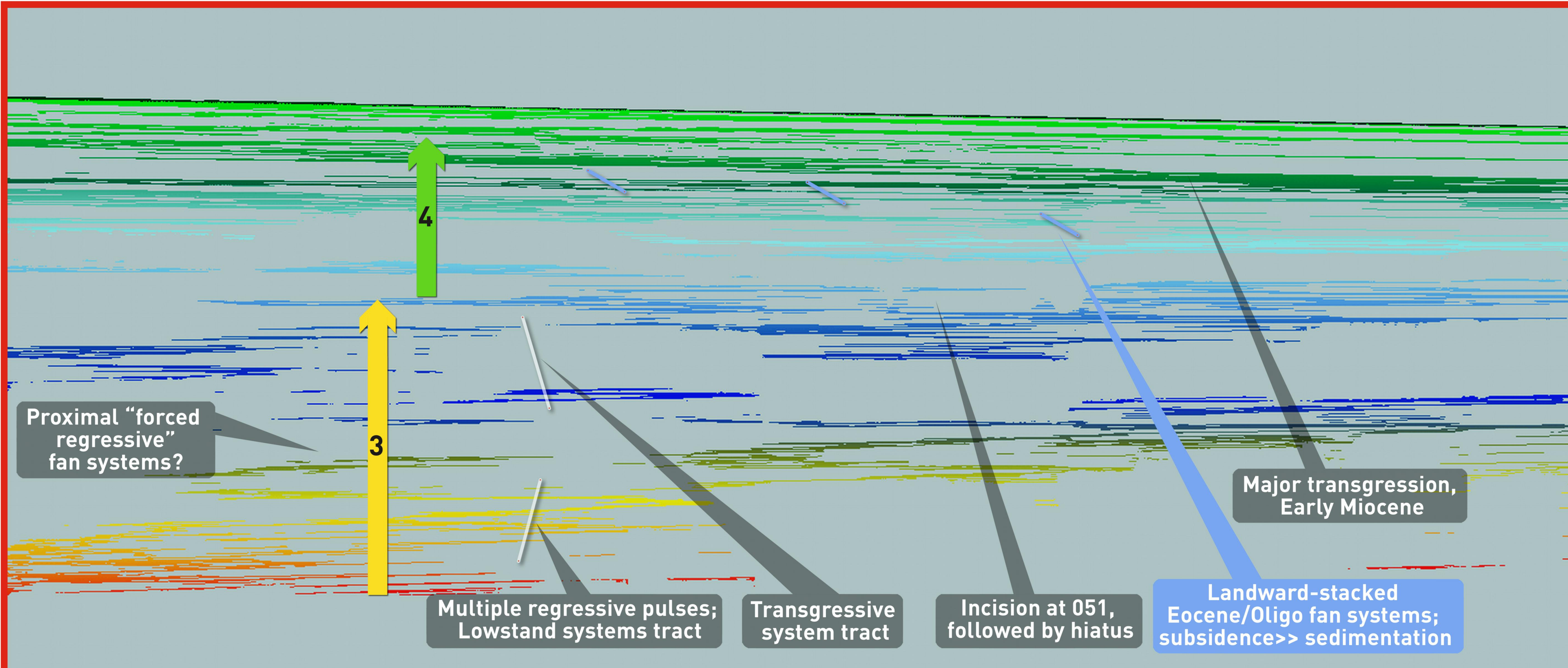
HorizonCube data generated from Line TZ3-2700.



HorizonCube data generated from line TZ3-3200 overlain on amplitude data



Stratal Packages interpreted from HorizonCube data generated from line TZ3-3200



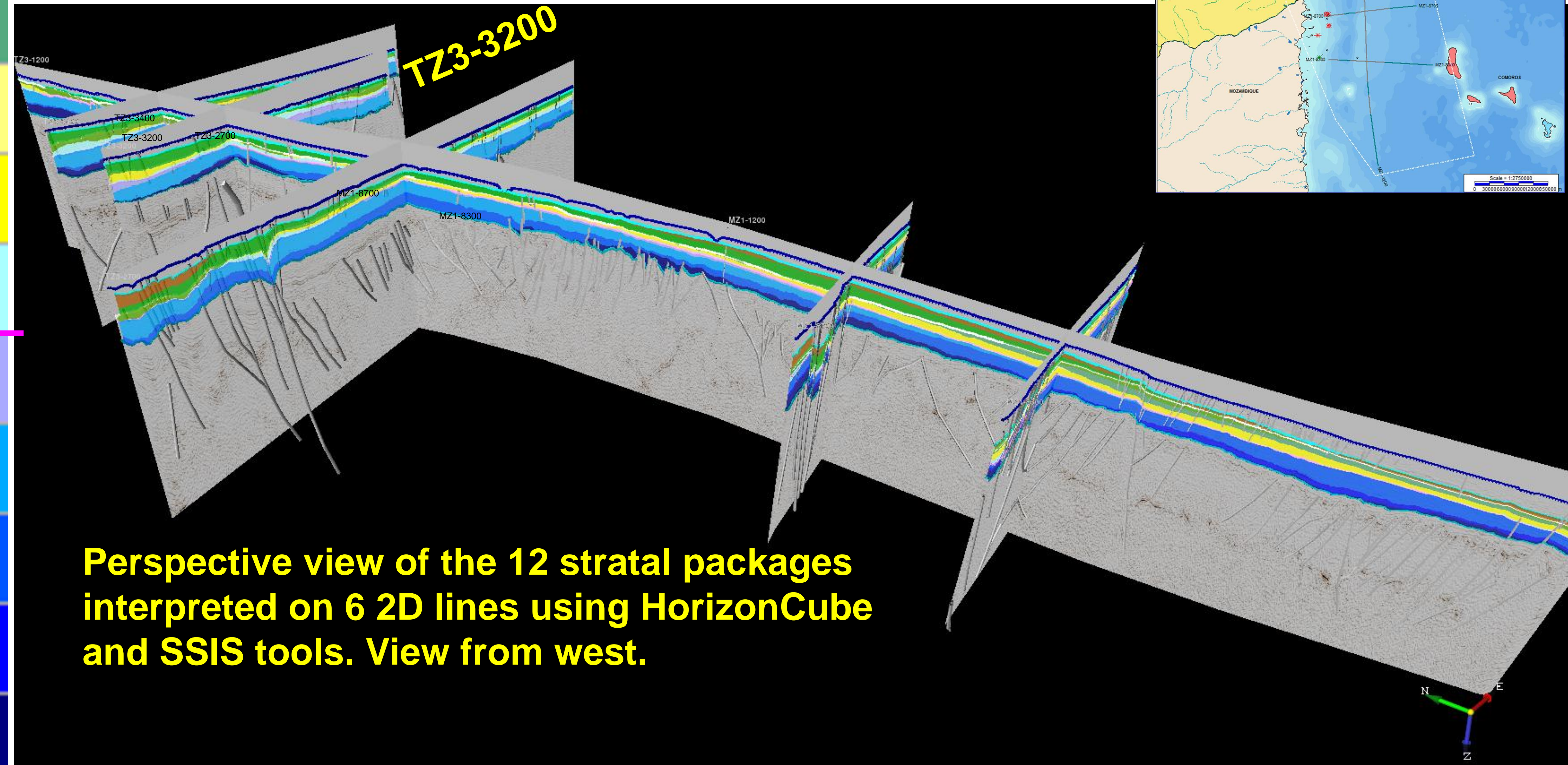
Wheeler domain representation and distribution of HorizonCube data. Stratal packages delineated from these data in combination with fence diagrams and normal amplitude seismic data.

Correlation and mapping of Stratal Packages yields:

- Regional shifts in sediment package distribution
- Sediment provenance changes
- Paleophysiographic reconstruction in the absence of direct shoreline connection (“Onlap-free world,” study area lies entirely in deep water province)



Twelve stratal packages correlated regionally between Early Miocene and Lower Cretaceous. See Table 1 for defining criteria for each stratal package.



Perspective view of the 12 stratal packages interpreted on 6 2D lines using HorizonCube and SSIS tools. View from west.